

IBPS Clerk Preliminary -2021. ICP-2021-110020

HINTS & SOLUTIONS

ANSWER KEY

1.(2)	21.(3)	41.(2)	61.(5)	81.(3)
2.(1)	22.(4)	42.(4)	62.(1)	82.(4)
3.(3)	23.(1)	43.(2)	63.(2)	83.(2)
4.(1)	24.(1)	44.(4)	64.(1)	84.(1)
5.(5)	25.(2)	45.(4)	65.(3)	85.(5)
6.(5)	26.(4)	46.(4)	66.(5)	86.(2)
7.(5)	27.(2)	47.(5)	67.(1)	87.(1)
8.(3)	28.(1)	48.(4)	68.(1)	88.(2)
9.(1)	29.(4)	49.(4)	69.(3)	89.(4)
10.(2)	30.(5)	50.(3)	70.(2)	90.(1)
11.(5)	31.(4)	51.(4)	71.(5)	91.(2)
12.(2)	32.(4)	52.(2)	72.(4)	92.(5)
13.(1)	33.(5)	53.(4)	73.(5)	93.(5)
14.(3)	34.(1)	54.(2)	74.(1)	94.(5)
15.(4)	35.(5)	55.(1)	75.(3)	95.(5)
16.(5)	36.(3)	56.(2)	76.(4)	96.(2)
17.(2)	37.(1)	57.(1)	77.(3)	97.(1)
18.(4)	38.(1)	58.(3)	78.(3)	98.(2)
19.(3)	39.(2)	59.(2)	79.(2)	99.(2)
20.(1)	40.(2)	60.(2)	80.(2)	100.(3)

HINTS & SOLUTIONS

- 1.(2) The minister noticed that there was a dog who used to eat, sleep and play with the Elephant. He was taken by a stranger three days ago. Then minister concluded that the royal Elephant is not sick, but he is lonesome without his dear friend, the Dog. This makes option (2) correct.
- 2.(1) The minister suggested to the King to make a declaration that whoever has the dog that used to live at the royal Elephant's shed will be penalized. Thus, (1) is the right answer.
- 3.(3) The man took the Dog to his home village, which was quite far away. The King's Elephant became very sad after this incident. Thus, (3) is the right answer.
- 4.(1) The Elephant keeper didn't own the Dog but sold it and extracted a sum of money from the deal. Thus, (1) is the correct answer.
- 5.(5) "The Bond of Friendship" is the correct title of the passage.
- 6.(5) The elephant was very dear to the king, so he was well-fed and well treated. Thus, (5) is the correct answer.
- 7.(5) **Extracted** means to make someone give you something. So, received is the word which is similar in meaning to it.
- 8.(3) **Declaration** means a formal or explicit statement or announcement. So, Announcement is the word which is similar in meaning to it.
- 9.(1) **Resist** means withstand the action or effect of. So, Give in is the word which is opposite in meaning to it.
- 10.(2) **Separated** means cause to move or be apart. So, United is the word which is opposite in meaning to it.
- 11-15. The proper sequence of sentences to form a meaningful paragraph will be **BADFCE**
- 11.(5) 12.(2)
- 13.(1) 14.(3) 15.(4)
- 16.(5) 'under, offer' fits the sentence appropriately.
- 17.(2) 'field, esteemed' fits the sentence appropriately where 'esteemed' means to respect and admire.
- 18.(4) 'accolades, constraints' fits the sentence appropriately where 'accolades' means an award or privilege granted as a special honour or as an acknowledgement of merit and 'constraints' means a limitation or restriction.
- 19.(3) 'indeed, feather' fits the sentence appropriately where 'feather in the cap' is a phrase which means an achievement that you can be proud of.
- 20.(1) 'evolve, composite' fits the sentence appropriately where 'evolve' means to develop gradually and 'composite' means made up of several parts or elements.
- 21.(3) Substitute 'guide' to with 'guides'.
- 22.(4) Substitute 'does' with 'did'
- 23.(1) Substitute 'deplete' with 'depletion'
- 24.(1) Substitute 'which' with 'who'
- 25.(2) Substitute 'toreducing' with 'reduce'
- 26.(4) 27.(2)
- 28.(1) 29.(4) 30.(5)
- 31.(4) $?\ = \frac{5161.5}{416.25} = 12.4.$
- 32.(4) $(15)^2 = (?)^2 - 99 \Rightarrow ? = 18.$
- 33.(5) $2^{3.9} \times 2^{1.2} \times 2^{0.8} = 2^{5.9} = 2^{(? - 27.32)}$
 $\Rightarrow 5.9 = ? - 27.32 \Rightarrow ? = 33.22.$
- 34.(1) $50 = \frac{? \times 25}{11} \Rightarrow ? = 22.$
- 35.(5) $1764 \div 12 = 147.$
- 36.(3) $\frac{x}{y+1} = \frac{1}{2}, \frac{x+1}{y} = 1$
 $\Rightarrow x = 2, y = 3, \frac{x}{y} = \frac{2}{3}.$
- 37.(1) A : B : C
 2 : 3 : 5
 $\xrightarrow{\quad \quad \quad}$
 3 \rightarrow 1200
 i.e. B's salary = Rs. 1200
 B's annual salary = Rs. 14400
 $x : y : z = 9 : 6 : 4$
- 38.(1) $(9x)^2 + (6x)^2 + (4x)^2 = 532$
 $x^2 = 4, x = 2$
 $6x = 12$

39.(2) $144000 \times \frac{105}{100} \times \frac{90}{100} \times \frac{115}{100} = 156492$

40.(2) 10% of SI = 150

Sum = $\frac{150}{10} \times 100 = \text{Rs. } 1500$

41.(2) $(80000 \times \frac{105}{100} \times \frac{104}{100} \times \frac{105}{100}) - 80000$
= Rs. 11728

42.(4) Milk : Water (after 1st replacement)

$(20 - \frac{20}{24} \times 4) : (4 - \frac{4}{24} \times 4 + 4)$ (after second replacement)

$\frac{100}{6} : \frac{44}{6}$
25 : 11

43.(2) $\frac{x}{3} - \frac{x}{4} = \frac{1}{2} \Rightarrow x = 6 \text{ km.}$

44.(4) $\frac{x}{4} - \frac{x}{12} = 1 \Rightarrow x = 6 \text{ km.}$

45.(4) Let breadth = b

$15 \times b = \frac{36}{30} \times 100 \times \frac{75}{100} \Rightarrow b = 6 \text{ m.}$

46.(4) Required % = $\frac{28.3}{45.8} \times 100 \approx 62\%$.

47.(5) Required fees = 75% of 14.8
 $= \frac{75}{100} \times 14.8 = 11.1 \text{ thousand} = 11100$

48.(4) Required difference
 $= 63.0 - 14.5 = 48.5 \text{ thousands} = 48500.$

49.(4) Required % = $\frac{10.2 - 7.5}{7.5} \times 100$

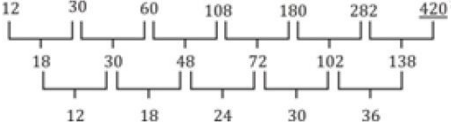
$= \frac{2.7}{7.5} \times 100 = 36\%.$

50.(3) Required average = $\frac{80.6}{5} = 16.12 = 16120.$

51.(4) $\times 4, \times 3, \times 2, \times 4, \times 3, \times 2, \dots$
Therefore $576 \times 4 = 2304.$

52.(2) +10, +12, +14, +16
Therefore, $73 + 18 = 91.$

53.(4) $1 \times 5 + 10, 15 \times 6 + 12, 102 \times 7 + 14, 728 \times 8 + 16$
Therefore, $5840 \times 9 + 18 = 52578.$

54.(2) 

55.(1) $\times 2 + 10, \times 2 - 10, \times 2 + 10, \times 2 - 10, \dots$

56.(2) 112% CP - 88% of CP = 6

$CP = \frac{6 \times 100}{24} = 25.$

57.(1) A + B = 40

C + B = 38

A + C = 42

A = 22, B = 18, C = 20 year

58.(3) Sum of 8 readings = $8 \times 24.3 = 194.4$

Sum of first 5 readings = 100.6

Sum of last 3 readings = $194.4 - 100.6 = 93.8$

Let 6th reading = x

7th reading = x + 3

8th reading = x + 8

$x + x + 3 + x + 8 = 93.8$

x = 27.6

59.(2) Let P and R can complete the work in x days.

$[(P + R) + (P + Q) + (Q + R)]$ 1 day work = $2(P + Q + R)$ 1 day work

$\frac{1}{x} + \frac{1}{8} + \frac{1}{12} = 2 \times \frac{1}{6}$

$\Rightarrow \frac{1}{x} = \frac{1}{3} - \left[\frac{1}{8} + \frac{1}{12} \right] = \frac{12}{96}$

No. of days in which P and R can complete the work = $\frac{96}{12} = 8 \text{ days.}$

60.(2) Length of remaining canal = $12 - \frac{4}{5} = 7.5 \text{ km}$

$= \frac{W_1}{M_1 D_1} = \frac{W_2}{M_2 D_2}$
 $= \frac{4.5}{45 \times 200} = \frac{7.5}{M_2 \times 150}$
 $= M_2 = 100$

Extra men to be employed $100 - 45 = 55 \text{ men}$

61.(5) $\approx 0.5 \times 10 \times 53 = 265$

62.(1) $\approx 25\% \text{ of } 2850 + 15 \times 2400 \approx 36700$

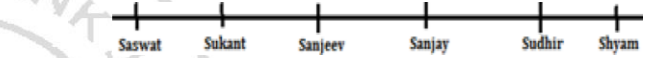
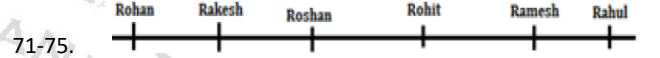
63.(2) $\approx \sqrt{4590} \times \frac{30}{100} \times 500 - \frac{15}{100} \times 1060 \approx 10,000$

64.(1) $\approx (16 \times 15 \times 20) \div (20 \times 27) \approx 9$

65.(3) $\approx 4000 \div 20 \times 2 = 400$

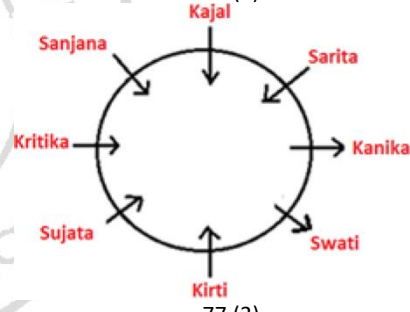
66.(5) 67.(1)

68.(1) 69.(3)



71.(5) 72.(4) 73.(5) 74.(1) 75.(3)

76-80.



76.(4)

78.(3)

81-85.

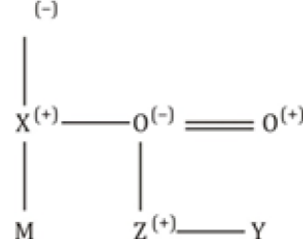
77.(3) 79.(2) 80.(2)

PERSON	GAMES	CARS
Arpit	Table tennis	Beleno
Arjit	Snooker	Etios
Raman	Snooker	Fiat
Anil	Ice hockey	Ferrari
Ravi	Table tennis	Benz
Ritesh	Ice hockey	Honda
Rohit	Snooker	Swift

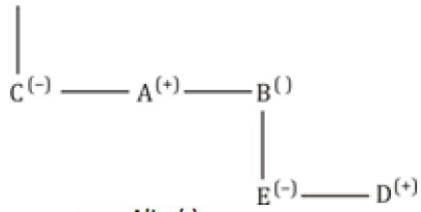
81.(3) 82.(4)

83.(2) 84.(1)

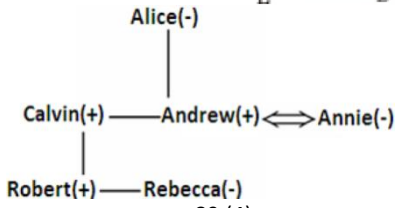
85.(5)



87.(1) F(+)

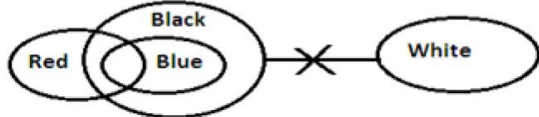


88-90.



88.(2)

91-92.

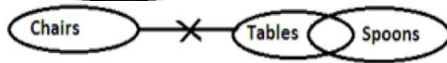


91.(2)

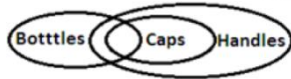
93.(5)



94.(5)



95.(5)



96-100.

you → ka
 solve → ja
 this → lu
 can → hu
 are → la
 intelligent → ju
 the → fu
 of → na
 so → fa

96.(2)

98.(2)

97.(1)

99.(2)

100.(3)

